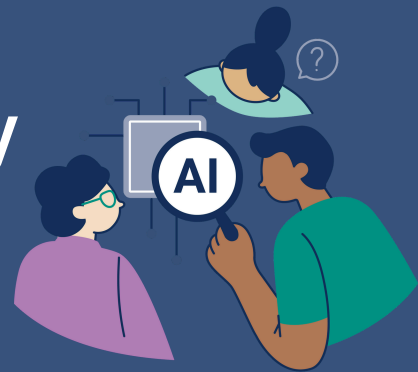


NAATI Artificial Intelligence Literacy Module

Overview and Learning Outcomes

Duration: 3 hours | **Recertification:** 20 PD points, Category 1.5

Cost: Free for NAATI certified practitioners on NAATILearn



Topic 1: Understanding AI and LLMs

You will build a foundational understanding of artificial intelligence — what it is, how it has developed over time, and the main types of AI. We'll also look closely at large language models, or LLMs, and why they matter for translation and interpreting professionals today.

- **Build the ability to evaluate, select, and integrate AI tools effectively.**
- **Develop ethical use practices, including client communication and quality assurance.**
- **Recognise both the opportunities and risks.**

Topic 2: Using LLMs and Prompt Engineering for Linguists

You will learn to give instructions to AI tools like ChatGPT so they can generate useful and reliable outputs. Prompting is not just about getting an answer, it is about shaping the response so it meets our professional needs.

- **Gain hands-on strategies for designing and refining prompts.**
- **Learn to adapt prompts for translation and interpreting contexts.**
- **Build awareness of common LLM errors and techniques to mitigate them.**
- **Use prompt engineering to make outputs more reliable, efficient, and aligned with professional standards.**



National Accreditation Authority
for Translators and Interpreters LTD

Topic 3: Data Policies and User Interfaces of Frontier LLMs

You will learn about the privacy and data policies of generative AI companies: we examine the main risks, policies, and protection strategies that matter for our professional practice. This topic also touches on what happens when large language models are integrated into computer-assisted translation tools.

You will learn about user interfaces of frontier LLMs. Many of these platforms share common features, but they also differ in their data policies, capabilities, and professional affordances. By exploring these platforms individually, this topic provides an accessible entry point to the broader landscape of LLM capabilities for any practitioner.

- **Understand data policies of major GenAI providers and their professional implications.**
- **Learn strategies for protecting client data and complying with ethical/legal requirements.**
- **Evaluate frontier LLM interfaces for professional suitability.**
- **Develop awareness of local/self-hosted alternatives to increase privacy and control.**

