

# NAATI Recertification

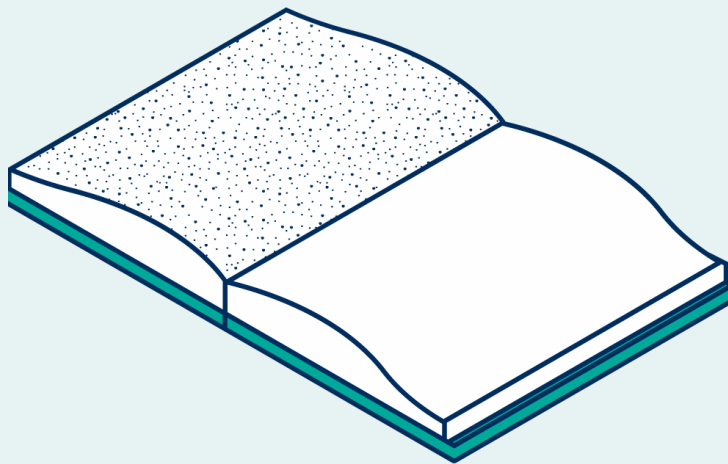
New catalogue and policy launch

Michael Nemarich, Chief Operating Officer  
June 2026



National Accreditation Authority  
for Translators and Interpreters LTD





## Overview

- **The case for change**  
Analysis of the factors that influenced the review
- **Consultation and design phases**  
How we consulted and developed the catalogue
- **An overview of changes**  
What we're changing and the rationale behind it
- **What's next?**  
The next steps in the rollout, and what to expect



The case  
for change

# The case for change

**60%**

practitioners who require assistance with their application

**18 yrs**

Years since the current catalogue was fully reviewed

**75%**

categories that were claimed by <20% of practitioners

**36%**

categories that were claimed by <5% of practitioners

**6,459**

surveys sent to previous practitioners about recertification

**5X**

the likelihood a practitioner in a small language combination won't recertify

**58%**

practitioners who thought the fee was reasonable

**3K +**

practitioners who will recertify their credential in the coming year

# The case for change

“More credentials make it difficult to recertify”

“Lack of good quality PD”

“system isn’t user friendly”

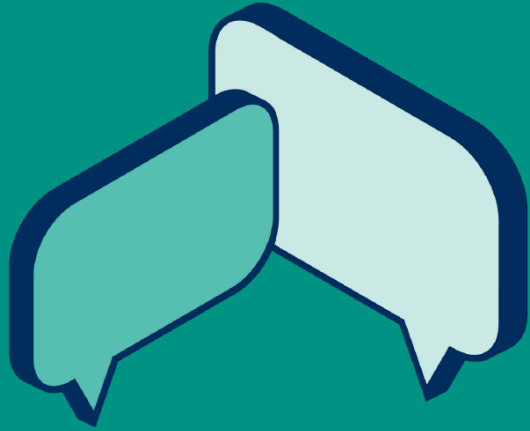
“cost can be a barrier”

“hard to know what category to put PD in”

“not enough work in my language”

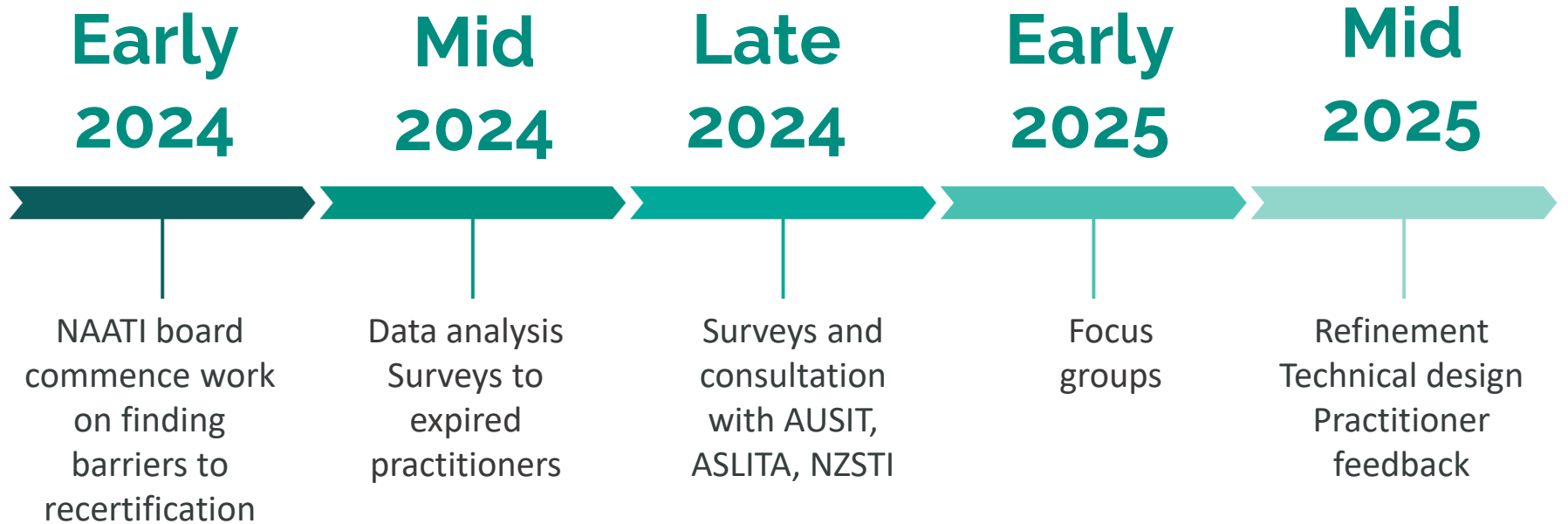
“Personal circumstances got in the way”

“missed the window for recertifying”



# Consultation and design

# Consultation and design





# Overview of changes

# Overview of changes - policies



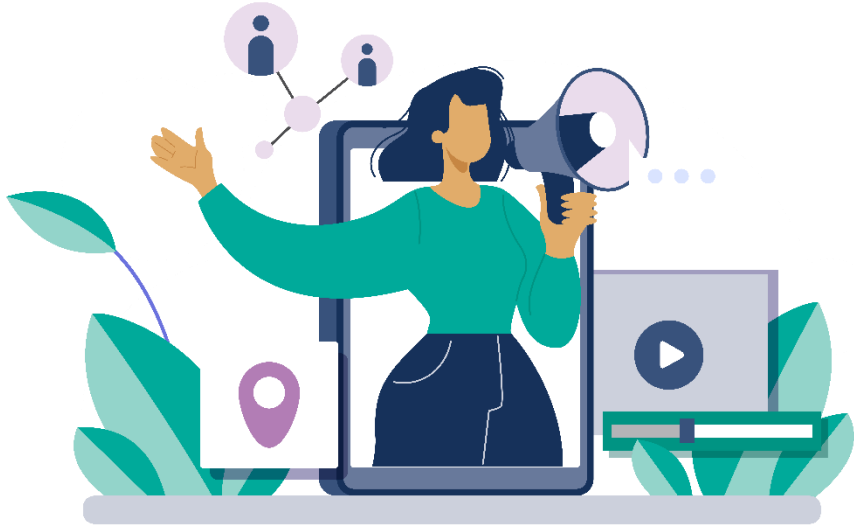
- Work Practice Requirements
- Discounted fee for no products
- Increased recertification window
- 1 year extensions
- Additional reminders
- Improvements to myNAATI

# Overview of changes - categories



- Less Categories
- Ethics stand alone category
- Simplification of points
- Rebalancing of points
- New sub-categories
  - Industry leadership
  - Australian & NZ society
  - Technology

# Overview of changes - categories



- Increased value for professional membership
- More ways to claim points for work practice
- New category descriptors & clearer language



**Further  
Support**

# Further Support – NAATI.com.au

Criteria & fees

Logbook

Apply & get support

NAATI provides an online logbook for you to record your professional development through your myNAATI account.

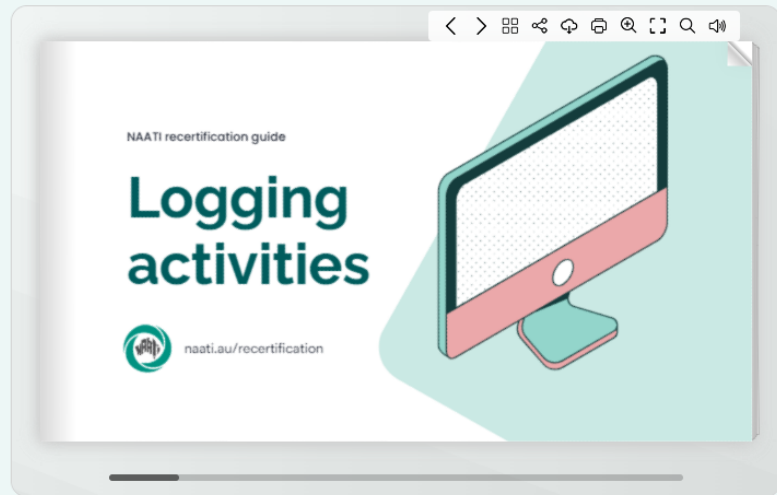
Once you have recorded all of your professional development, you can submit your recertification application from the myNAATI homepage. More details on how to apply are under the ['Apply & get support'](#) tab.

## Recording your professional development

NAATI provides an online logbook in your myNAATI account to record your work practice and professional development.

Once you have recorded all required activities, you can submit your recertification application from the myNAATI homepage. More details are provided in the 'Apply and get support' tab.

**Important:** All professional development activities must fall within your certification period. We cannot accept activities completed outside this period.



Category A

Category B

Category C

Category D

## Category A: Ethics

Review each activity below to check how many points you can claim, what minimum requirement applies, and whether there are any annual limits or evidence requirements.

Category	Description	Requirements	Point Value	Restrictions
A.1	Completed training on professional ethics relevant to your credential	n/a	5 points per hour	n/a
A.2	Delivered a training session on professional ethics	1–4 hours (min)	10 points	Maximum of 20 points per year
A.3	Took part in self-directed or group activities focused on ethics (e.g. reading, writing, or discussing ethical topics)	1–4 hours (min)	10 points	Written evidence must be provided (stat dec/ written report/ certificate). Maximum 10 points per activity
A.4	Taught ethics for translators or interpreters at a tertiary education institution	1+ Semester	30 points	n/a
A.5	You can list other relevant PD activities not shown here – just include a short explanation of why they should count.	n/a	5 points per hour	Maximum of 10 points per activity

# Further Support – myNAATI

# NAATI Learn

The issue impacting H5P activities should now be resolved. If you are unable to access any activities, please email [learn@naati.com.au](mailto:learn@naati.com.au).



[Home](#) [Calendar](#) [Library](#)



You are currently using guest access [Log in](#)

## Welcome to NAATI Learn!

This platform hosts a number of courses and resources designed to support NAATI test candidates, practitioners, and other stakeholders.

[Browse courses](#)



Looking for something else?



# NAATI Learn



[Home](#) [Calendar](#) [Library](#)



You are currently using guest access | [Log in](#)

Use the **Search**, **Tags**, and **Additional Fields** filters to explore courses and resources designed for NAATI test candidates, certified practitioners, and other stakeholders.

Explore 52 Resources

Filters

Sort

Date modified (Most recently) ▾



Search

- Tags
- AI
  - AUSIT
  - CCI
  - CI
  - CLA
- [Show More...](#)

Additional fields

Access restrictions

Select...

INTERPRETING ▾

### Vicarious Trauma for Interpreters

When we interpret, we often immerse ourselves in the client's emotional world in order to convey what is meant by them. It...

🕒 1-2 hours

[More details](#)

[View course](#)



MENTAL HEALTH ▾

### Mental Toughness and Self-care

Translators and interpreters often work in high-pressure environments, facing both emotional and cognitive challenges that c...

🕒 1-2 hours

[More details](#)

[View course](#)



DIVERSITY ▾

### Translating and Interpreting Gender Diversity

This course - originally developed by RMIT - aims to equip translators and interpreters with language, knowledge and best...

🕒 3-4 hours

[More details](#)

[View course](#)



DISABILITY ▾

### Disability Awareness for Interpreters

This module helps NAATI interpreters explore key concepts of disability, including models, legal frameworks, and...

🕒 3-4 hours

[More details](#)

[View course](#)



# NAATI Learn

The issue impacting HSP activities should now be resolved. If you are unable to access any activities, please email [learn@naati.com.au](mailto:learn@naati.com.au).

Home Calendar Library

CI  
CLA  
Show More...

Additional fields

Access restrictions  
Select...

PD category  
Select...

PD points  
Select...

Clear

## Interpreting in Mental Health Settings: Understanding the Contexts, Challenges and Rewards



INTERPRETING MENTAL HEALTH NAATI X AUSIT  
PROFESSIONAL DEVELOPMENT

**Access restrictions:** Certified practitioners only

**PD category:** Category B: Skills Development

**PD item:** B.2

**PD points:** 10

**Estimated duration:** 1–2 hours

### Description

Interpreting in mental health settings can present unique professional and emotional challenges. Interpreters may be asked to work in a wide range of environments, including hospital and community settings. These encounters can involve complex communication, sensitive topics, and emotionally charged conversations.

This presentation will provide an overview of the types of mental health environments interpreters may encounter and explore the particular challenges that can arise in these contexts. It will also discuss practical strategies to support interpreters in managing these situations while maintaining professionalism and wellbeing, and highlight the important and rewarding role interpreters play in supporting mental health care.

After completing this webinar, participants will gain:

Knowledge of:

- Different mental health settings and environments in which interpreters may work (e.g. hospital and community contexts)
- Common communication dynamics and challenges in mental health interpreting
- The ethical and professional considerations specific to mental health settings
- The role of interpreters in supporting effective mental health care

Skills to:

- Identify and navigate complex and sensitive interactions in mental health settings
- Apply practical strategies to manage emotionally charged or challenging situations

You are currently using guest access

explore key concepts of disability, including models, legal frameworks, and...

3–4 hours

More details

View course



AI

### Interpreting Technologies Module

This module lets you explore the history of interpreting and interpreters, so you can learn how the practice has evolved from...

3–4 hours

More details

View course

**Thank you**  
**Any questions?**

